

LED BACK-LIT FLAT PANEL

SPECIFICATION

LED BACK-LIT FLAT PANEL



NOTES:

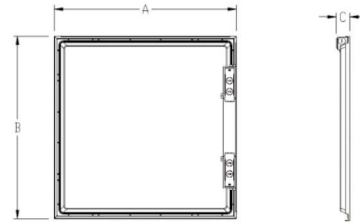
1. This specification for our regular product specifications.

DESCRIPTIONS

LED Flat Panel ceiling light is a high performance LED panel that uses a unique back-lit design to provide a longer lasting lighting solution that replaces traditional fluorescent lighting or low-end edge-lits found in offices, hospitals, schools and more.

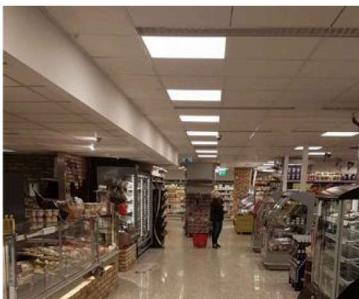
CHARACTERISTICS

- ◆ Standard 105lpw or 125lpw
- ◆ Light weight design (30% lighter than edge-lit flat panels)
- ◆ Flicker-free, 0-10V dimming, Dali dimming optional
- ◆ Post-painted white aluminum frame to fit any decor
- ◆ Designed to easily fit into existing suspended T-bar ceilings or hang via aircraft cable (optional accessory)
- ◆ Available in 4000K and 5000K
- ◆ Available in UGR<19



Model	Size	A	B	C
22-NV-4KD	2'*2'*1.19"	2'	2'	1.69"
22-NV-5KD				
24-NV-4KD	4'*2'*1.19"	4'	2'	1.69"
24-NV-5KD				

APPLICATIONS



WARRANTY

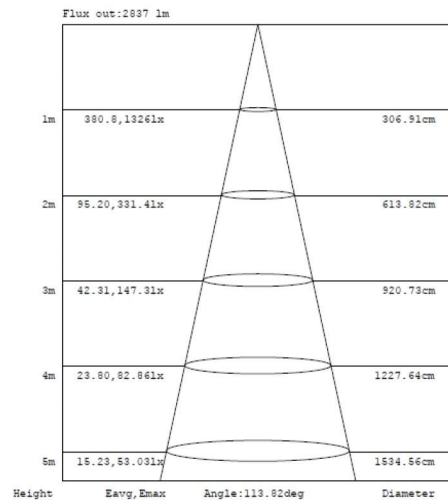
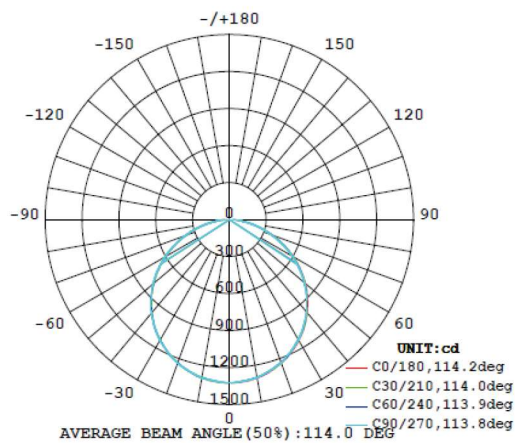
5-year standard warranty. Please consult with sales for detailed agreement.

LED BACK-LIT FLAT PANEL

TECHNICAL PARAMETERS

Code	AN-BP22-NV-4KD	AN-BP22-NV-5KD	AN-BP22-NV-4KD	AN-BP22-NV-5KD
Power (W)	30W		45W	
PF	0.90			
Input Voltage (V)	120-277			
Lumen output (lm)	125LM/WATT		125LM/WATT	
CCT (K)	4000/5000			
Dimming	1-10V			
UGR	<19 optional			
CRI	>80			
Beam Angle	120°			
Material	Aluminum+ Steel plate+ PS			
Operating Temperature	-20°C to 40°C/-4°F to 104°F			
Humidity	10% - 90%			
Installation	Recessed/ Surface mount/Suspended mount			
Certificate	UL/DLC in process			
Environment	Indoor			
Warranty	5Years			
Product Dimension(L*W*H)	2' * 2' * 1.69"		4' * 2' * 1.69"	

PHOTOMETRIC DATA



5-year standard warranty. Please consult with sales for detailed agreement.